

# Instruction Manual

## Electric Drum Rotator YL450



YL450       YL450-1

**Note:** Operator must read and understand this Instruction Manual before using.

# Preface

1. In order to make the users quickly understand the structure and performance features of this product, so as to carry out regular maintenance as well as correct regulation of vehicle, our factory hereby compile this operation instruction sheet as well as spare parts table for users' reference.
2. Read the instruction sheet and parts table carefully before using and make clear the structural performance, Maintenance as well as attentions.
3. The personnel without license cannot operate the drum rotator. Only those qualified personnel with professional training as well as approved by relevant departments and familiar with the structural performance can independently operate the vehicle.
4. The work site of drum rotator shall be flat, solid place with enough loading capacity.
5. Our company will not hold any responsibility for the modification of drum rotator by users without the prior approval of our company.

# Table

1、 Introduction and Application

2、 Main technical parameter

3、 Safety operation

4. Battery and Charger

5. Maintenance

6. Parts table

# 1. Introduction and Application

As the best selling product, our Electric Drum Rotator with Battery Power Drum Lift 450kg Capacity YL450 can realize Power Lift and Power Drum Tilt for ergonomic drum pouring.

Drum lifters on wheels designed to lift and pour a drum at up to 2300mm high; and also the Vertical-Lift Drum Pourers make it simple to raise and pour a heavy 450kg steel & plastic drum easily and smoothly. You can control the drum pouring angle and height while you dispense. The compact base and quality components of this Vertical-Lift drum handler make it easy to maneuver.

With the function of providing controlled drum pouring, our YL450 drum handler is popularly used to the power Lift and Power Drum Tilt for ergonomic drum pouring.

Drum lifters on wheels designed to lift and pour a drum at up to 2300mm high. Now we all know clearly that it is not only a drum dumper, it s a controlled drum dispensing in fact. So it is widely used for chemical plants and food plants for transferring, loading & unloading, charging and compounding materials of fluids, such as dyes, paintings, adhesives, petrol, edible oils, etc.

## 2、 Main Technical Parameter

Model	YL450	YL450-1
Load capacity(kg)	450	450
Net weight(kg)	330	330
Electric Lift	√	√
Electric Rotate	√	√
Anchor Ear	√	√
Front Wheel (Nylon Wheel)(mm)	Φ80*60	Φ80*60
Rear Wheel (Nylon Wheel)(mm)	Φ150*50	Φ150*50
Inner/Outer Width of Front Leg(mm)	630/810	630/810
The length of front leg(mm)	740	740
Outline Dimension(mm L*W*H)	1280*980*1880	1280*980*1880
Turning Radius(mm)	1620	1620
Pump Unit Power (kw/h)	1.5	1.5
Battery (Ah/V)	12/120	12/120
Smart Charger (V)	12	12
Lifting Height(mm)	2450	2450
Lifting Speed(mm/s)	120	120
Rotating speed(mm/s)	1800/30s	1800/30s

### 3、 Safety Operation

★ Inspect below before the drum rotator used

1. When the electric drum rotator is damaged on transport, don't put it in use and contact relevant person.
2. Before ex-factory the drum rotator has been adding lubrication oil, the hydraulic parts has added lubrication oil.
3. If enclose battery, the battery has been fully charged. Inspect the electrolyte level of every space and see if the proportion of the electrolyte conform to the requirement(see 《Maintenance》 )
4. If the electric drum rotator enclose the charger machine, should put it in safety asap which it is convenient charge the battery when need.

★ Operation of electric drum rotator

1. Open the anchorear, adjust the lock ring-pull, making the anchor ear hold tightly the drum which need be transported. The plastic drum should use limiting stopper.
2. Turn on direction switch, lifting the drum to the specified height. It can electric rotate 360 degree.
3. Stop 5~10 seconds and then you can read the display weight.

## 4、 Battery and Charger

1. The charger machine rated parameter:

Input: 220V AC 50/60HZ

Output: 12V DC 15A

2. When start charging, insert the output plug of the charger into the charging socket of the stacker, then insert the AC input plug of the charger into the power socket.

When end of the charge, firstly pull out the AC power plug.

3. The charger doesn't set the AC power switch. When the plug is inserted, it starts charging. So must observe the order of insert and pull out.

4. The charger panel is setting the charging mode selection switch, select "Normal" (N) or "Automatic" (A).

5. Charging need the environment of well ventilated、 no naked flame、 no spark and no thermal radiation source.

# 5、 Maintenance

## ★ Inspection Regulation

1. On the basis of regular full inspection of the equipment can reduce the loss of the equipment, some possible malady can be eliminated before seriously damage. Carefully maintenance can reduce the equipment maintenance fee and stop time.
2. Battery is the power source of multi-function electric rotator. To get the good power output and battery working life and keep the equipment best status, need carry out every stipulation of the manual.

## ★ Daily maintenance

Check if the battery is charged fully (See battery first section)

## ★ Weekly inspection

The user of Multi-function electric rotator should spend some minutes to clean the dirty. Especially check whether the wheel shaft is stuck by the steel and fragments.

## ★ Half one yearly inspection

1. Add the oil to the lifting chain and check the worn situation. If the electric rotator works in the dusty environment, then should clear it with oil cloth in time. And check the chain worn situation.

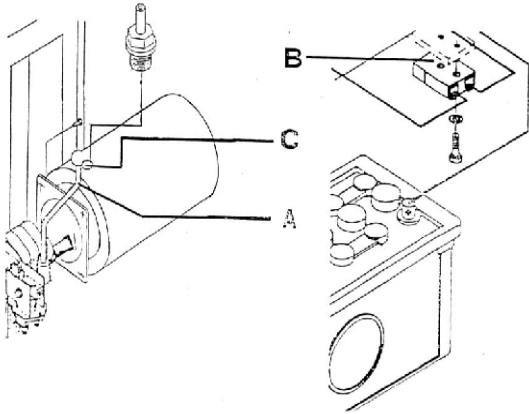
## ★ The replacement of hydraulic oil in the hydraulic system

1 It is advised that replace hydraulic oil every one month (or 200 hours). Replace it every one year even it works less than 200 hours. You can easily manage to replace it by the below method:

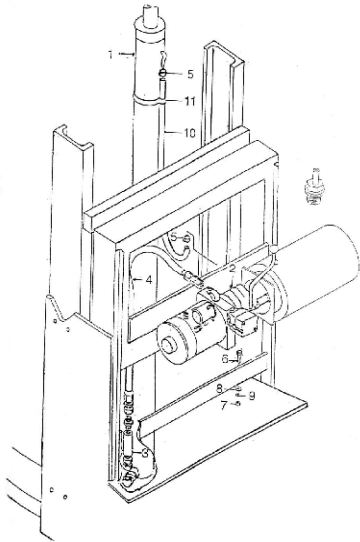
3. Ensure the movable frame is in the lowest position, disassemble the oil cylinder under part hose connection and put it in the vessel. Handle the lifting hand shank to operate the pump and vent all the oil of the oil tank. Use YA-N32 hydraulic oil or the similar. If it works in lower temperature, suggest adopt YH-10 hydraulic oil. Make two to three times of lifting to let the air not exist in the system, the equipment will work normally. If lift height doesn't reach to the needed height, then should supplement the hydraulic oil.



## 6、 Parts List

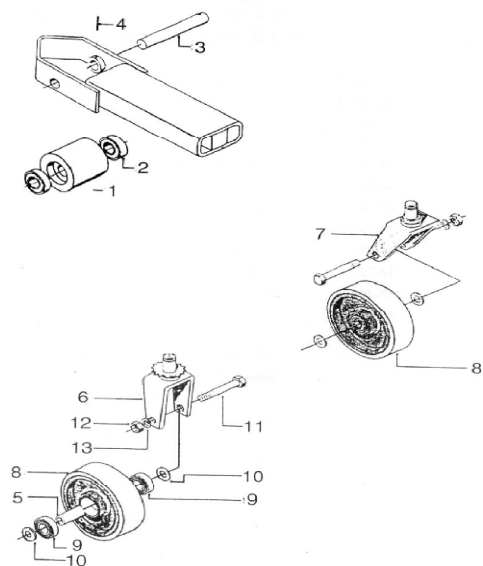


1. Toggle back the handle A, pallet fork decline
2. Toggle front the handle A pallet fork rise
3. This handle is with spring installation which can revert to neutral position.. It should walk in the flat floor. If not flat floor, the fork should rise at least 300mm from floor.
4. Lift heavy cargos should be slowly, don't over-load using this rotator.
5. charging port B
6. Lubrication hole C



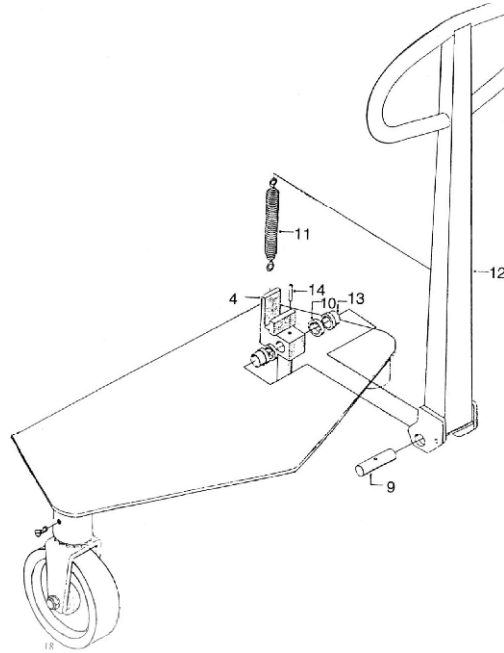
### Lifting system

NO	Name	Quantity
1	Lifting Jack 1600	1
2	Oil pump	1
3	Pressure release valve	1
4	High pressure oil pipe	1
5	Connection joint	2
6	Screw	2
7	Nut	2
8	Washer	2
9	Lock washer	2
10	Lifting tubing 1600	1
11	Fixing sleeve	2

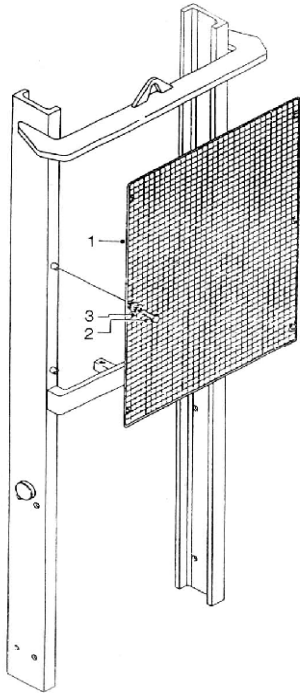


### Front wheel and rear wheel

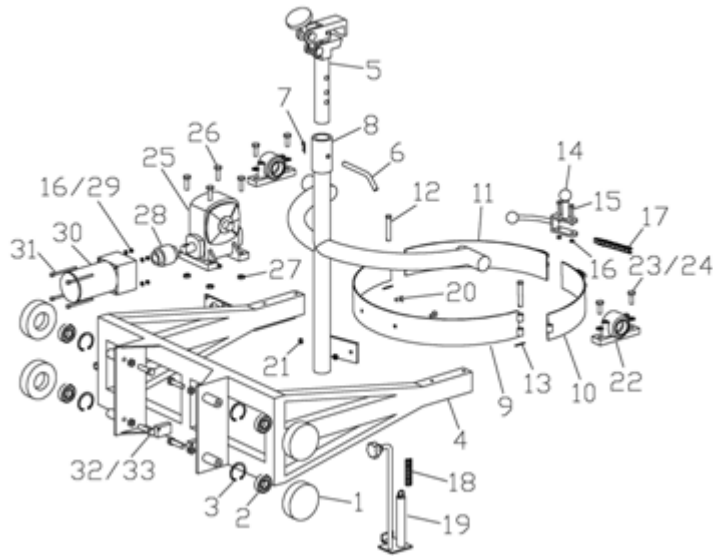
NO	Name	Quantity
1	Roller	1
2	Ball bearing	1
3	Axle	1
4	Axis pin	1
5	Axle	1
6	Stand	1
7	Roller bracket	1
8	Rear-wheel	2
9	Ball bearing	2
10	Sealed ring	2
11	Screw	2
12	Nut	2
13	Locking washer	1



<b>Control System</b>		
NO	Name	Quantity
2	Control Frame	1
9	Wheel and axle	1
10	Baffle	2
11	Air spring	1
12	Hand Shank	1
13	Shaft Sleeve	2
14	Taper pin	1



<b>Door frame fence screening</b>		
No	Name	Quantity
1	Fence screening	1
2	Screw	6
3	Washer	6



No	Name	Unit	Quantity	No	Name	Unit	Quantity
A1	Roller	Piece	4	A18	Spring	Piece	1
A2	205 bearing	Piece	4	A19	Oil drum hook	Piece	1
A3	Φ52 hole check ring	Piece	4	A20	M8X20 Sunk screw	Piece	2
A4	inner tower	Piece	1	A21	M8 Nut	Piece	2
A5	CUT	Piece	1	A22	Bearing House	Piece	2
A6	Fixed pin	Piece	1	A23	M10X30 Screw	Piece	4
A7	R type pin	Piece	1	A24	Φ10 flat washer	Piece	4
A8	Cut rack	Piece	1	A25	Reduction drive	Piece	1
A9	Anchor ear 1	Piece	1	A26	M10X40 Screw	Piece	1
A10	Anchor ear 2	Piece	1	A27	M10 NUT	Piece	1
A11	Anchor ear 3	Piece	1	A28	coupler	Piece	1
A12	Anchor ear shaft	Piece	2	A29	Φ6 Spring gasket	Piece	4
A13	Anchor ear shaft pin	Piece	2	A30	Rotating Motor	Piece	1
A14	Clamping Device	Piece	1	A31	M6X90 Screw	Piece	4
A15	M6X55 Screw	Piece	2	A32	M12X80 Screw	Piece	4
A16	M6 Nut	Piece	6	A33	M12 Nut	Piece	4
A17	Clamp chain	Piece	1				
A18							