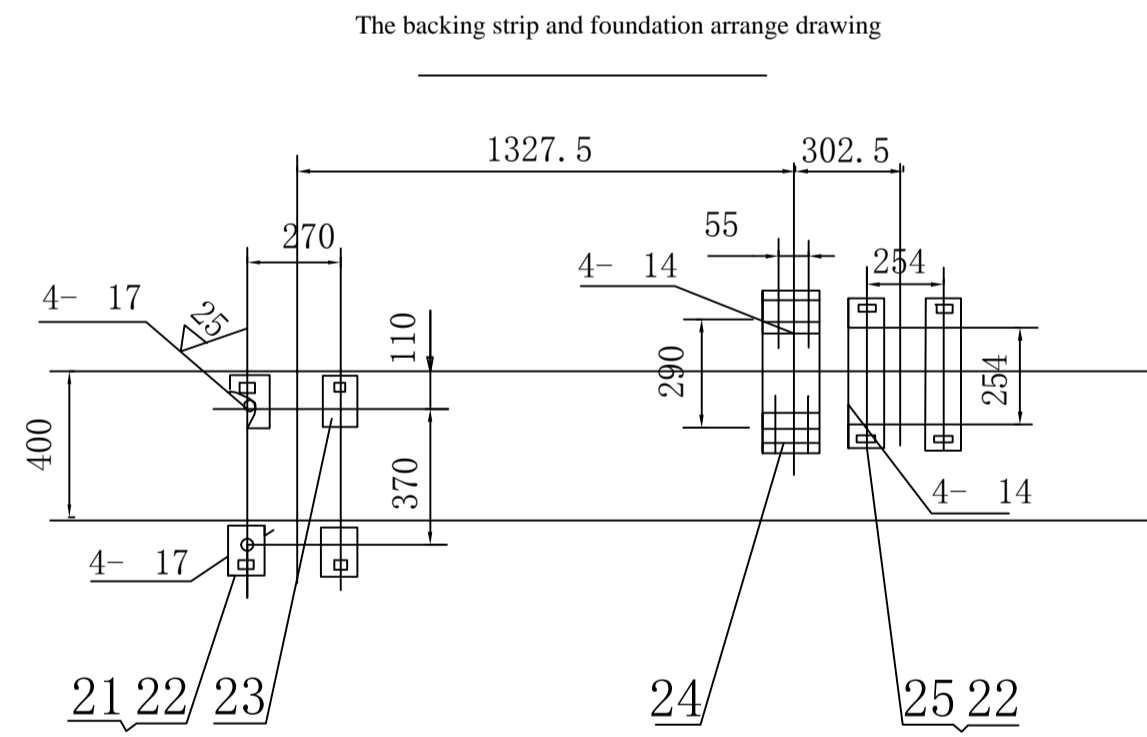
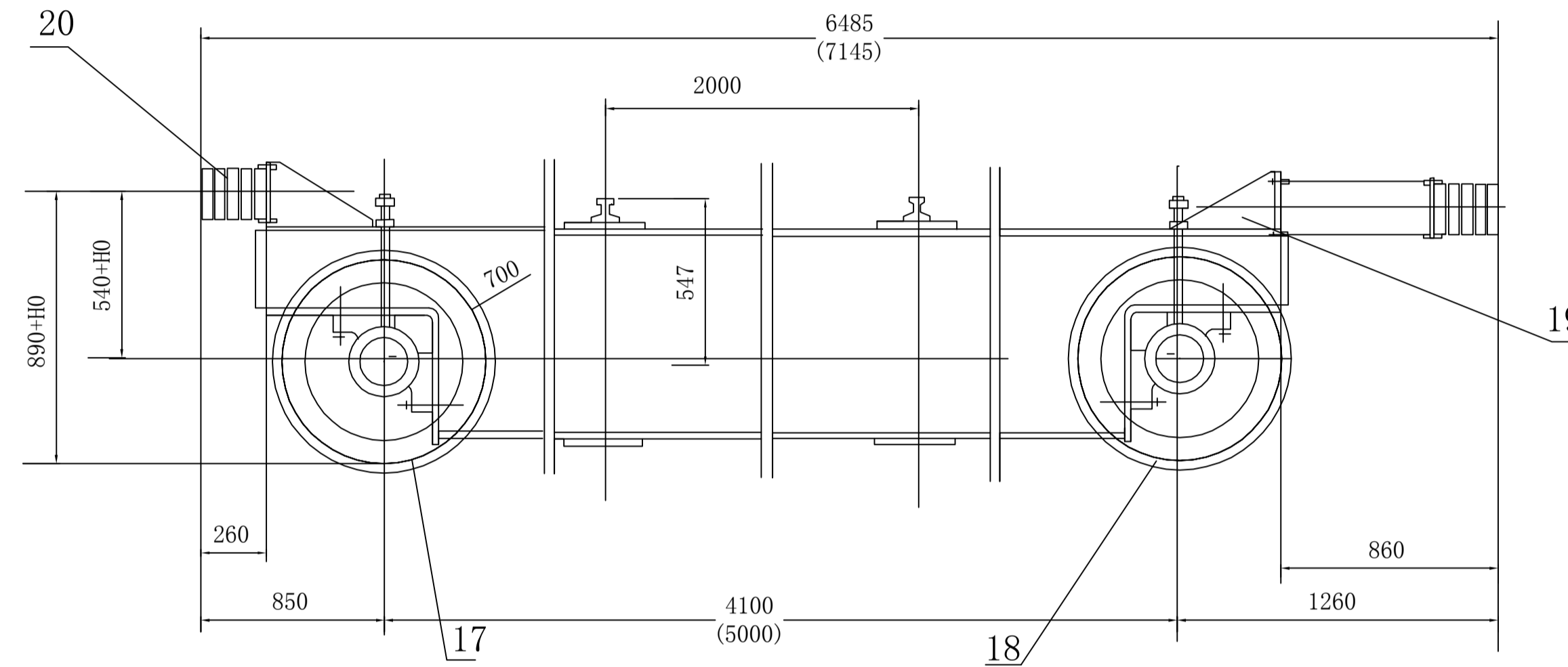
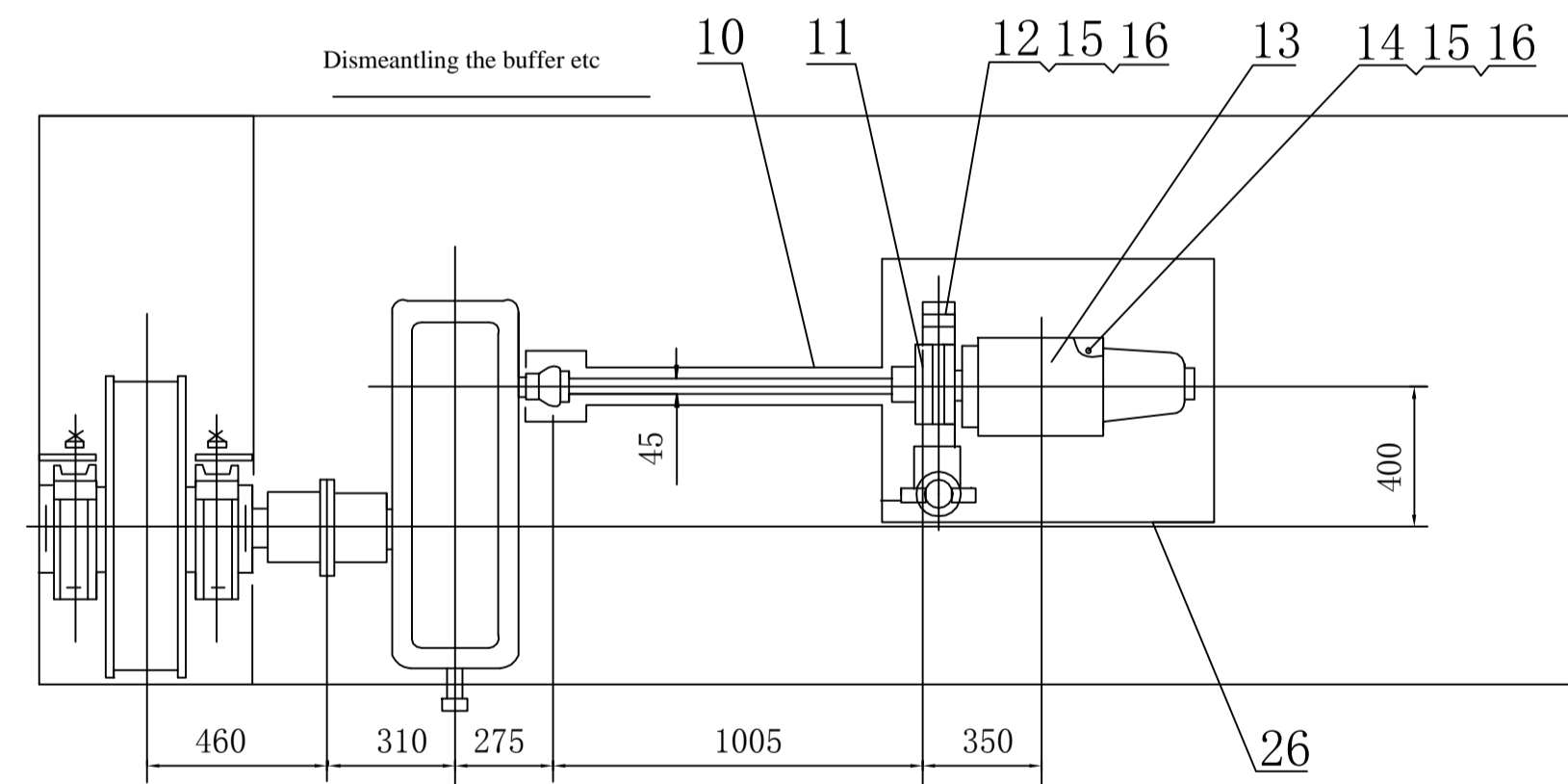
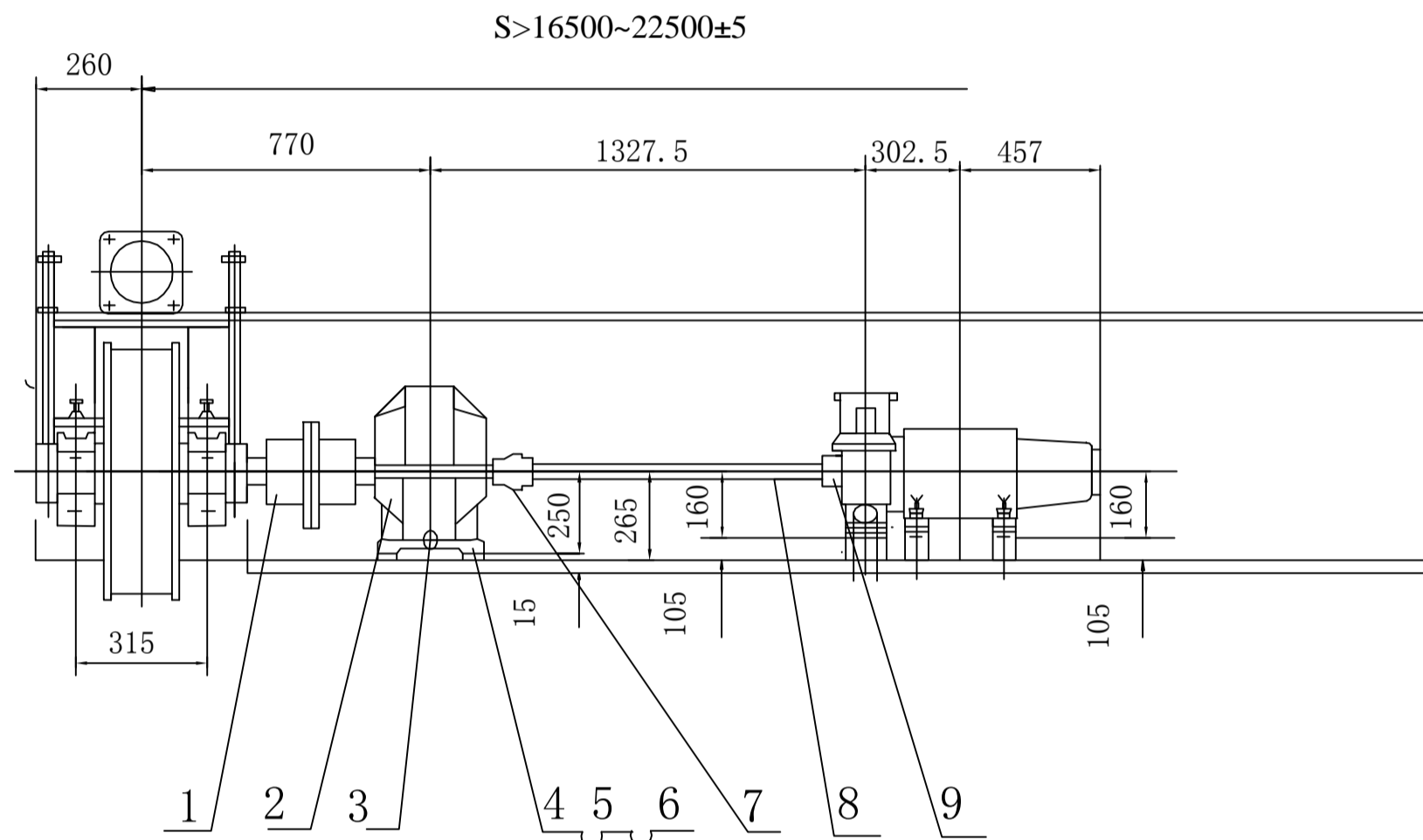


HIET1601S



Technology specification

1. The organization installment adjustment completes, will possess the foundation (the buffer foundation to eliminate outside) the backing strip, obstructing iron slab the spot to weld completely, uses the T42 welding rod.
2. The spare part assembly, the experiment and the installment should conform to the JB1036-82 stipulation.
3. Other products borrow this chart, the gauge and always extends the size to be supposed to see this hoist crane Assembly drawing.
4. In the parenthesis numeral is the span 25.5-31.5 meters.
5. The buffer center and distance between the large vehicle track surface is most greatly 140 (H0 < 250).

Performance parameter list

Hoisting up weight	t	10	model	YW-25-200/30
Span work rank	m	>16.5-22.5	Brake	Braking moment Nm 2×80
Running rate	m/min	102	Hydraulic pressure driver unit	YT1-25ZB/4
Model		ZQH-400-1/2	Power	Three-phase AC 380V 50HZ
Reduction Velocity ratio	1	20.49	Cushion distance	mm 150
Motor Model		YZR160L-6	Wheel diameter	mm 700
Power	KW	2×7.5	Wheel bearing inside diameter	mm 120
Rotational speed	r/min	945		

Item	Code name	Name	Material	Quantity	Unit weight (kg)	Total weight (kg)	Note
26	Y944	The large vehicle guards the rain shade	Part	2	38.1	76.2	Left + right 1 outdoor uses
25	R3307	Motor foundation 105	Part	2	6.12	12.24	
	R3304				7.29	14.58	
24	R1822	Brake foundation 105	Part	2	2.5	5.0	
23	T4-1963.232	Reduction of backing strip d=12	A3F	2	2.1	4.2	
22	Q/DQ148-79	Obstructing iron slab 50×20	-	16	0.156	2.496	
21	T4-1963.231	Reduction of backing strip d=12	A3F	2	2.6	5.2	
20	A1371	Carbonizes the buffer	Part	2	30	60	
19	A1371	Carbonizes the buffer	-	2	69	138	
18	L10G	Driving wheel group 700	-	2	508	1016	
17	T2-351.1542	Passive wheel group 700	Part	2	495	990	
16	GB93-76	Gasket 12	65Mn	16	0.0046	0.0736	
15	GB52-76	Nut M12	A3	16	0.016	0.256	
14	GB30-76	Bolt M12×50	A3	8	0.058	0.464	
13		Motor YZR160L-6	Part	2	172	344	
12	GB30-76	Bolt M12×40	A3	8	0.040	0.320	
11	Z173	Brake YW25-300/30	Part	2	41.3	82.6	
10	Y985/Y986	Safety mask	-	2	12.103	24.206	In/Out
9	8310G	Brake pulley shaft coupling	-	2	19.2	38.4	
8	318C 1000	Axis	-	2	12.57	25.14	45×110/45×110
7	S2103	Gear shaft coupling	Part	2	13.6	27.2	
6	GB93-76	Gasket 16	65Mn	8	0.008	0.064	
5	GB52-76	Nut M16	A3	8	0.034	0.27	
4	GB30-76	Bolt M16×75	A3	8	0.15	1.2	
3	H270	Water and drill tubing 250	Part	2	0.545	1.09	
2	Q1-421.6G	Reduction	-	2	253	506	i=20.49
1	S1501	Gear shaft coupling	Part	2	61.56	123.12	

51091.31H

Large vehicle movement organization

Shandong qingyun qizhongjixie youxiangongsi

Dongyueqizhongshebeichang