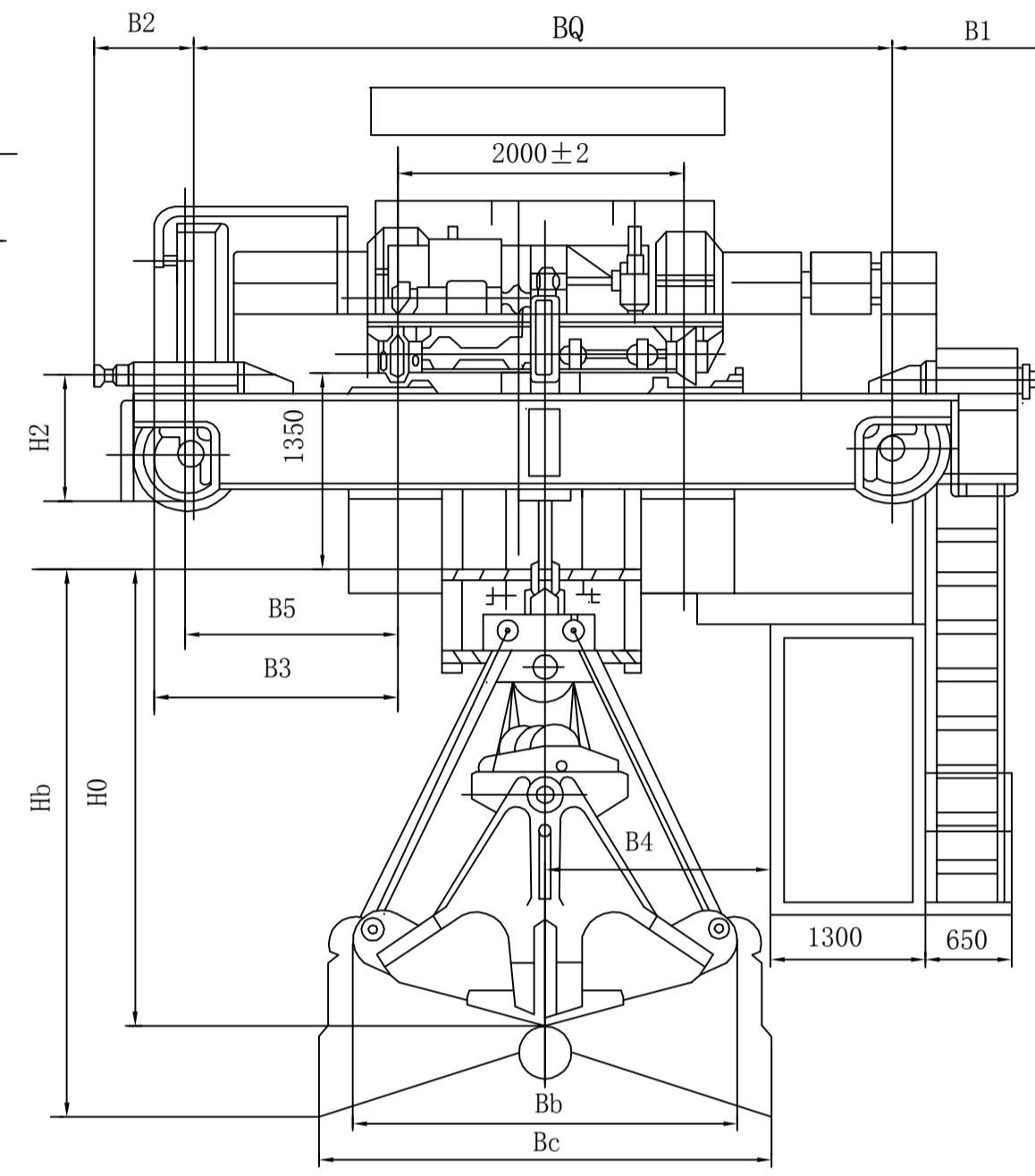
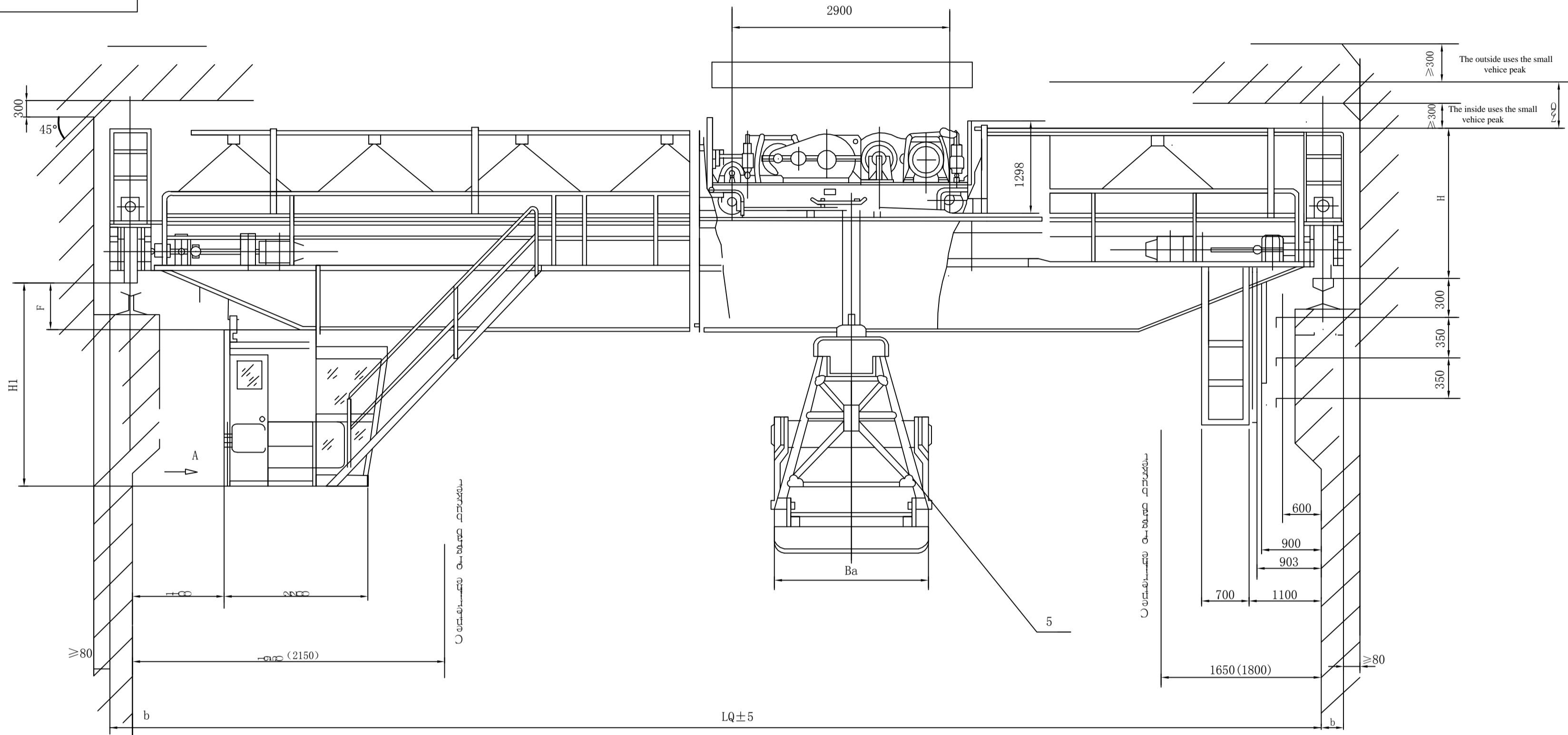


HI6019



Size or quality	Span S (m)														
	10.5	13.5	16.5	19.5	22.5	25.5	28.5	31.5							
H (mm)	2095				2185										
H1 (mm)	2550	2610	2760	2770	2920	3070	3220	3320							
H2 (mm)	780+H0				890+H0										
F (mm)	130	230	380	380	530	680	830	930							
b (mm)	1010				795		365		55						
b (mm)	230				250										
B (mm)	6385				6485		7145								
BQ (mm)	4000				4100		5000								
B1 (mm)	1535				1295										
B2 (mm)	850														
B3 (mm)	1643 (1488)														
B4 (mm)	1320			1440		1640									
B5 (mm)	1356	1381	1406	1431	1456										
B6 (mm)	2535			2585		2795									
B7 (mm)	1850			1900		2350									
Along number 4 qualities (kg)	8630	10361	12976	15535	18789	22990	26767	30004							
Along number 1 qualities (kg)	1904	2003	2094	2198	2287	2379	2481	2573							
Along number 3 qualities (kg)	In room				2971				3733						
	Out room				3037				3800						
Hoist crane total weight (kg)	In room				26593				28488	31147	35000	38437	43026	46873	50400
	Out room				27492				29386	32550	35891	39328	43917	47864	51291
Max wheel pressure (KN)	124	134	144	156	166	179	200	201							

Note: H0 is an altitude which the large vehiclebuffer increases.

Grab size and weight meter

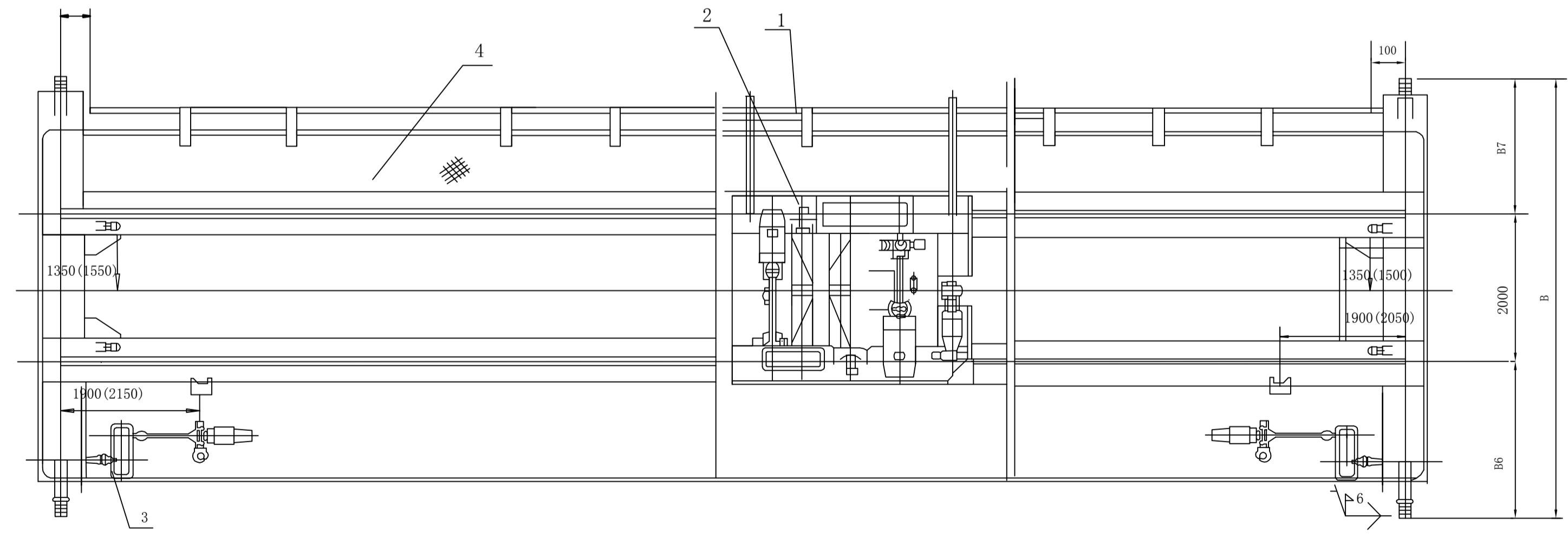
Chart number	Model	Volume m³	Bulk weight t/m³	Own weight Kg	Size (mm)				
					Ba	Bb	Bc	Ha	Hb
U127	Light model	5	≤1	4800	2060	2970	3900	3990	~4560
U123	Medium model	3	>1~1.7	4803	1764	2670	3430	3747	~4297
				4866	1764	2670	3590	3827	~4517
U119	Heavy model	2	>1.8~2.5	4850	1528	2470	3220	3640	~4125
				4913	1528	2470	3380	3720	~4345
U115	Overload model	1.5	>2.5~3.3	4730	1416	2230	2920	3490	~3910
				4739	1416	2230	3080	3570	~4130

- Technology specification
- The hoist crane assembly and the experiment should conform to stipulation the JB1036-82.
 - The hoist crane must defer to stipulation installment and the welding the installment attachment chart.
 - The hoist crane when opens the truck transportation and the scene install, end girder connection, according to chart or illustration number QLBI blueprint stipulation disassembling.
 - A cab platform entrance minute side, the end surface, the top entrance three kind of graphical representations for the side platform entrance, arrow A show for the end surface platform entrance, has not marked the gate the position, for top entrance.
 - The hoist crane dead weight has not included the grab dead weight.
 - The electric motor insulation rank selects sees the electrical assembly circuit diagram.
 - In the parenthesis the numeral for outdoor uses.
 - The handling room divides into the sealing chamber and guarantees the greenhouse three kinds, may install left side of the bridge or right margin, installs when the right margin, car electric conduction hangs outside the line in the side.

Performance parameter list

Item	Physical construction name	Lifts the organization		Item	Movement organization			
		Lifts	Opens the closed		Small vehicle	Large vehicle		
Hoisting up weight	t	10 (Including grab weight)		Orbital distance	m	2	>10.5~16.5	>16.5~31.5
Lifts the speed	m/min	40.8	40.8	Running rate	m/min	41.6	112.5	102
Work rank	M6	M6	Work rank	M6	M6			
	M18	M18	Clashion distance	mm	100	150	150	
Total of the various organizations motor power	Plan (m)	10.5~16.5	>16.5~31.5	Max wheel pressure	KN	9.38 (51.44)	Sees table	
Power	KW	103.5	Rail model	24Kg/m	Sees use	43Kg/m Or QU70	QZ model	
						Three-phase AC	380V	50HZ

Item	Code number	Name	Material	Pieces	Unit pieces	Total Weight(Kg)	Note	
5		Grab		1				
4		Bridge rack	Part	1	Sees table			
3		Movement organization	Part	1	Sees table	<Q>16.5-31.5 <Q>10.5-16.5		
2		small vehicle	Part	1	Sees table			
1		Electricity	Part	1	Sees table	<Q>10.5-31.5		
		1st page	Altogether page of			B		
		Weight(Kg)	Proportion	Date				
		Sees the table	1:50					
		Grab bridge type hoist crane assembly drawing						
		10.5-31.5m						
		QZ model						
		Shandong qingyun qizhongjixie youxiangongsi dongyingqizhongshibeichang						



描图
校图
图库签字
日期