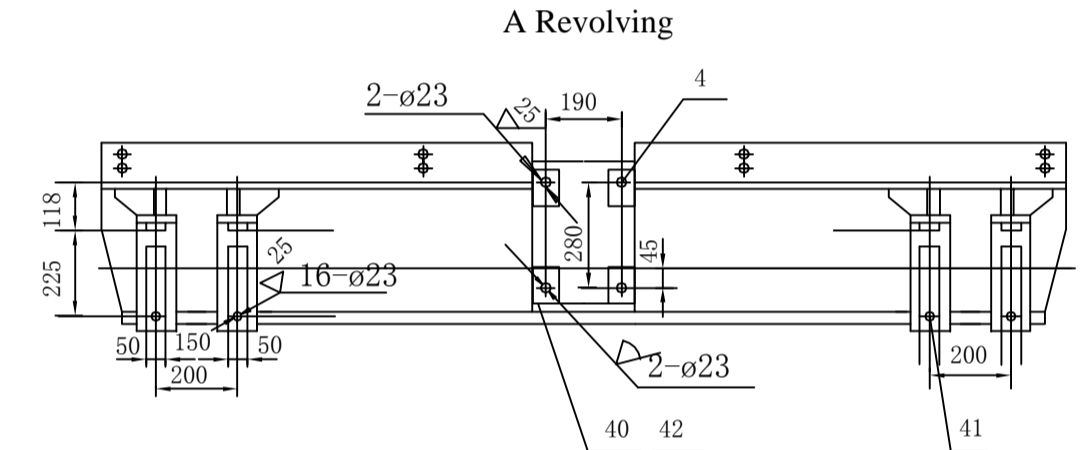
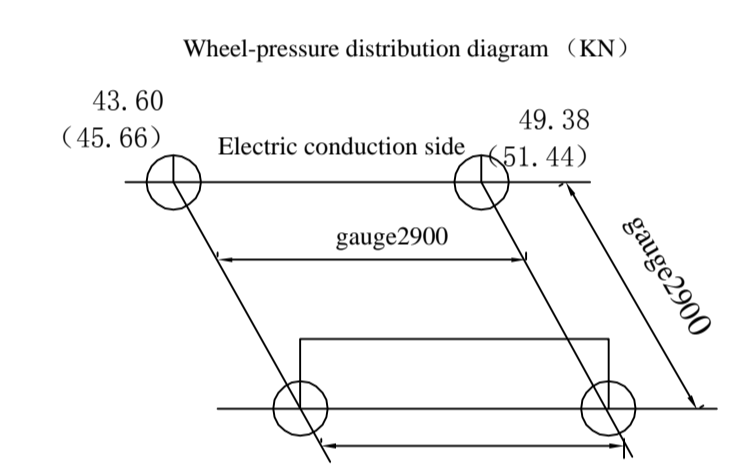
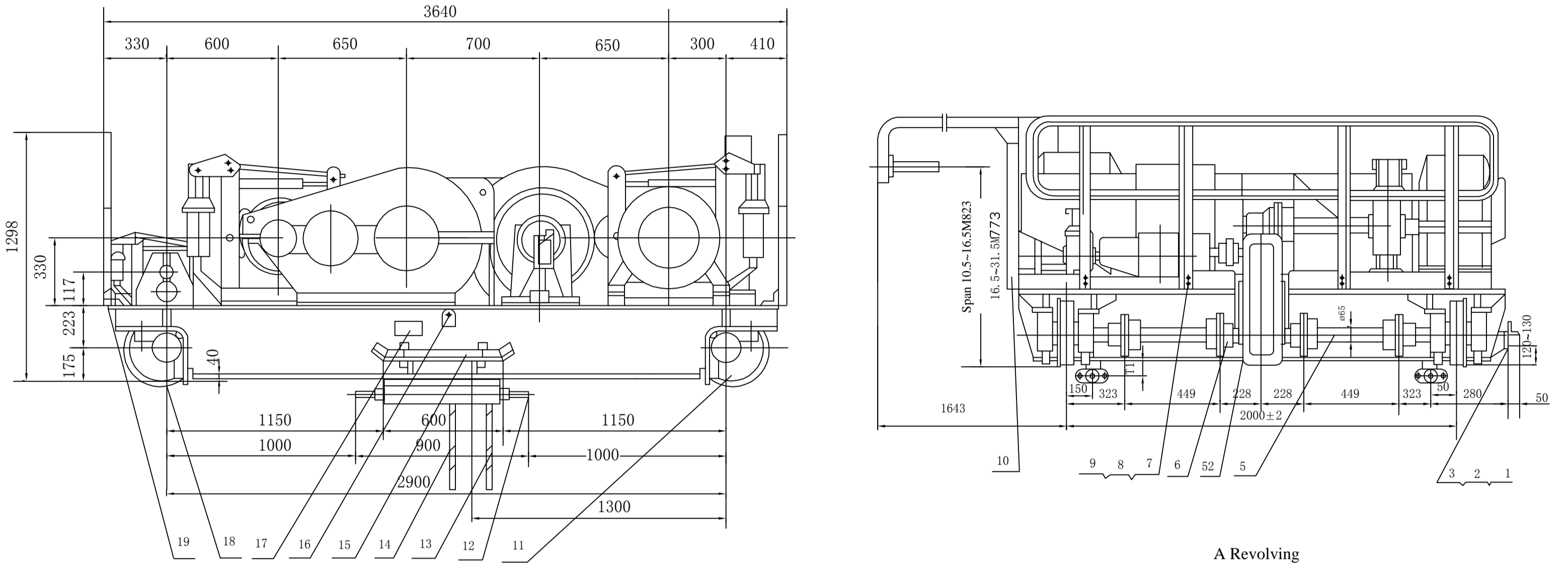
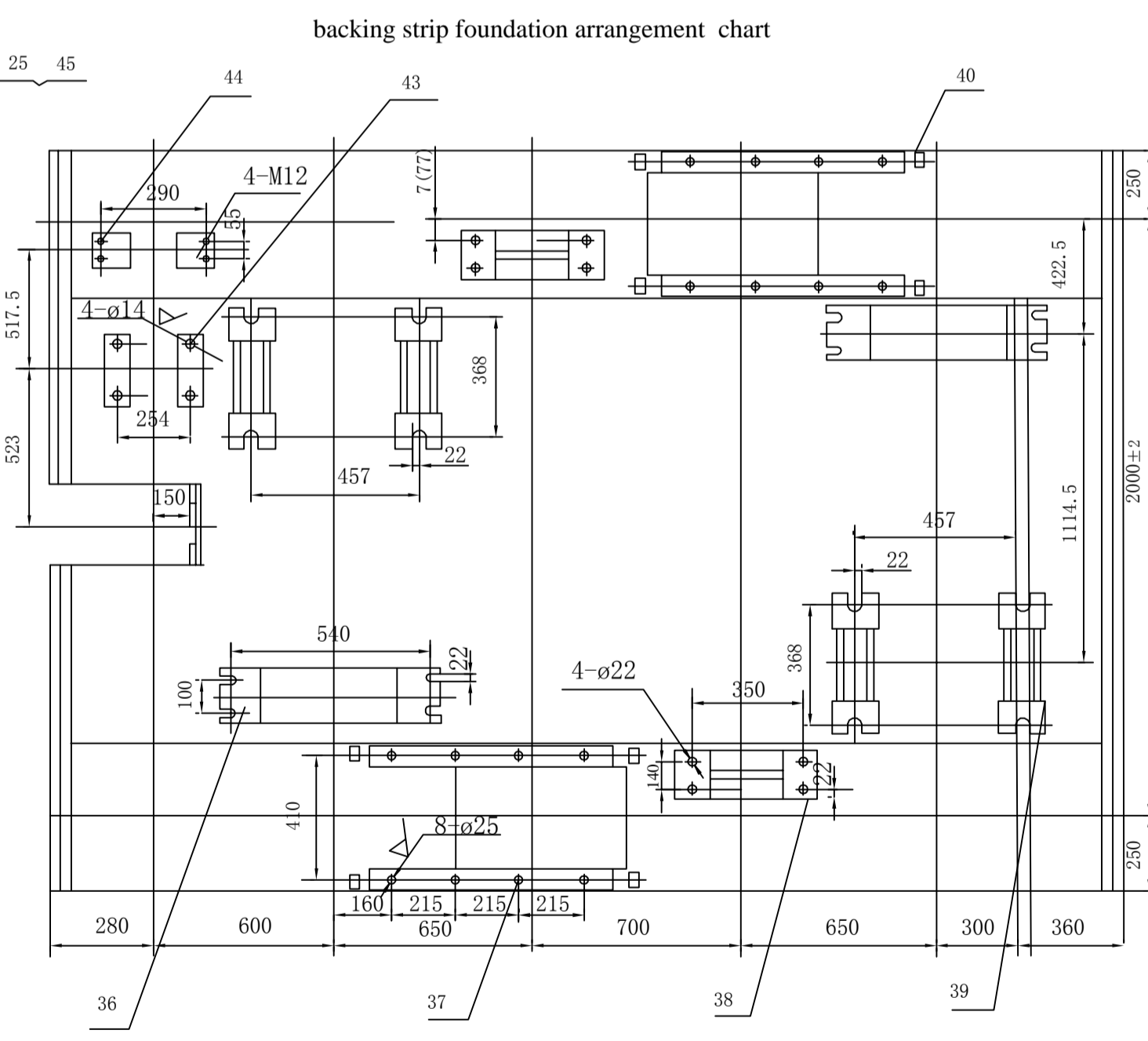
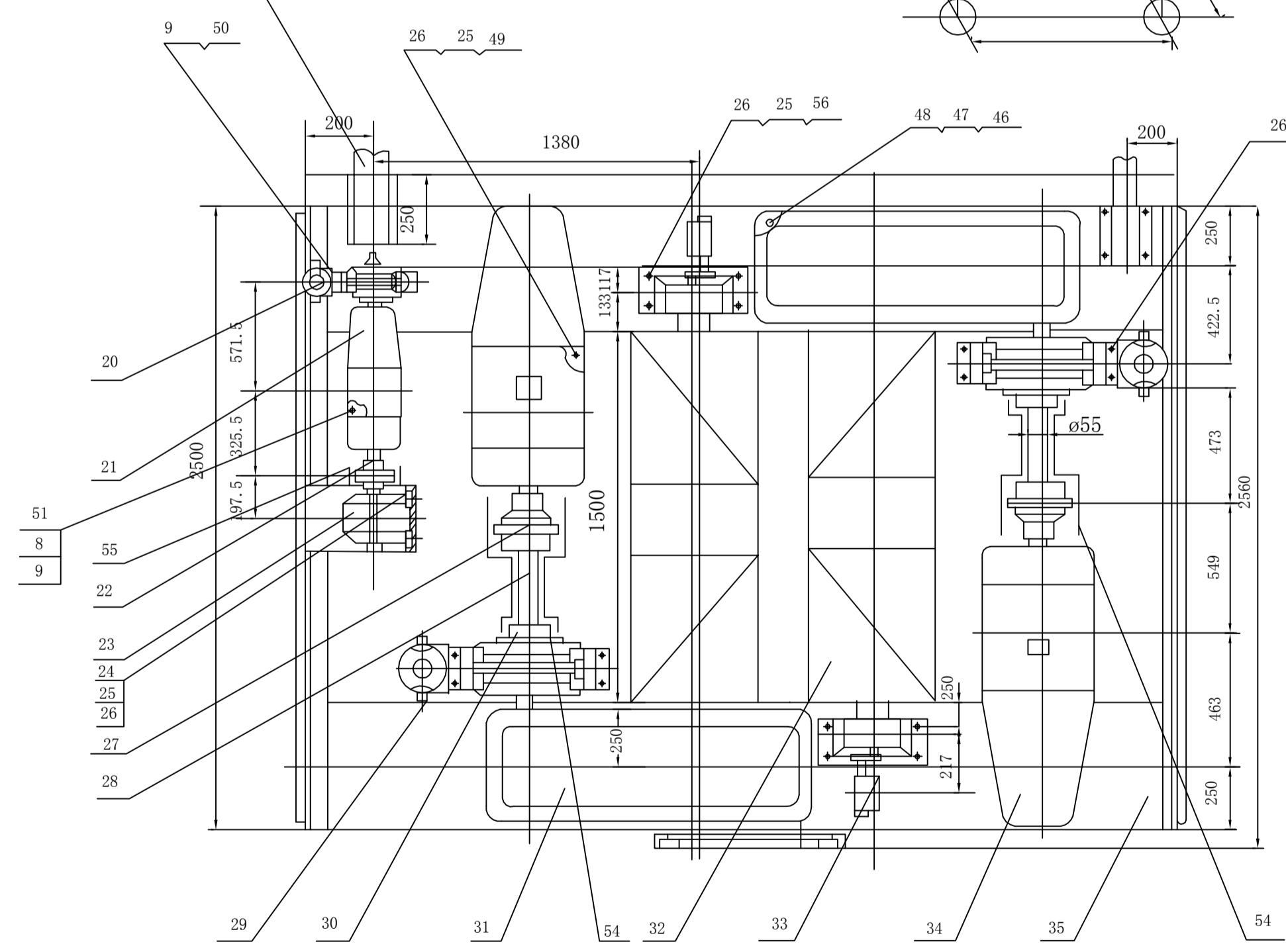


HZ T6019



Control room in right side time electric conduction according to this manufacture



### Technical performance parameter list

Item	Grab organization		Item	Small vehicle movement
	Lifts the organization	Opens the closed organization		
Hoisting up weight (t)	10	( Including grab weight )	Orbital distance ( mm )	2000
Working speed m/min	40.8	40.8	Running ratem/min	41.6
Max lifts the altitude ( m )	18	18	Gauge ( mm )	2900
Work rank		M6	Work rank	M6
Power source		Three-phase AC 50HZ 380V		
Steel wire	Structure		Cushion distance ( mm )	100
	Quantity	2	Rail model	24kg/m
Max work pulling force	25.50	25.50	Wheel diameter ( mm )	ø350
Reel diameter ( mm )	ø500	ø500	Wheel bearing inside diameter ( mm )	ø90
Pulley diameter ( mm )	ø500	ø500	Max wheel-pressure ( KN )	51.44
Motor	Model	YZR280S-10	Model	YZR160N1-6
	Power ( KW )	37	Power ( KW )	5.5
Rotational speed ( r/min )	575	575	Rotational speed ( r/min )	930
Reducer	Model	ZCH-550-2CA	Model	ZSC-400-1-1
	Transmission ratio	31.5	Transmission ratio	22.4
Brake	Model	YWZ4-400/121	Model	YWZ4-200/30
	Braking moment ( KN )	2000	Braking moment ( KN )	300
Limit switch	LX7-1	LX7-1	Limit switch	LX10-11

### Steel wire length and weight meter

Lifts highly ( m )	6	8	10	12	14	16	18
Length ( m )	36	40	44	48	52	56	60
weight ( kg )	54	60	65	72	78	84	90
1.5m' Overload model	Length ( m )	80	84	88	92	96	100
	weight ( kg )	122	128	134	140	148	159
2m' Heavy model	Length ( m )	81	85	89	93	97	101
	weight ( kg )	123	129	135	141	147	154
3m' Medium model	Length ( m )	75	79	83	87	91	95
	weight ( kg )	115	121	127	133	139	145
5m' Light model	Length ( m )	61	65	68	73	77	81
	weight ( kg )	94	100	106	112	118	124

- ### Technology specification
- After organization installment adjustment appropriate, will possess the backing strip, the foundation, keeps off the iron to weld in, on the frame, the welding rod uses E43 high, the welded joint 6, the welded joint is full.
  - The assembly and the experiment should conform to stipulation the JB1036-82.
  - The car electric conduction combination number is: When span 10.5-16.5m E1055-1 (E1055-2), when span >16.5-31.5m E1055-3(E1055-4).  
When control room when bridge, when span 10.5-16.5m E1055-2  
When span >16.5-31.5m inside and outside E1055-3(E1055-4) room same.
  - In the parenthesis the numeral uses for outside.
  - Backing strip, in foundation general arrangement, including belt lifting capacity killer stand size.

56	GB30-76	Bolt N20×75	8	A3	0.242	1.936	
38	R1285	Reel place	2	part	7.3	14.6	Di
32	T515	Reel groups900×1500 ( Right )	2	part	852	1704	ca
56	GB30-76	Bolt N20×0.5	8	A3	0.255	2.04	
38	R2288	reel place	2	part	12.1	12.1	br
32	T778	Reel groups500×1500 ( Right )	2	part	852	1704	ca

Replaces the part							
Item	Code number	Name	Quantity	Material	Unit weight ( Kg )	Total weight	
56	Replaces the part	Bolt N20	Sees the table	A3	Sees the table	Sees the table	
55	Y1328	Safety mask	1	part	3.4	3.4	
54	Y1327	Safety mask	2		8.37	16.74	
53	Y981	Guards the rain shade	1	part	774	774	out
52	GB30-76	Bolt N20×160	2	A3	0.452	0.904	Th
51	GB30-76	N12×85	4	A3	0.052	0.214	Ek
50	GB30-76	N12×25	4	A3	0.052	0.214	Br
49	GB30-76	Bolt N20×75	8	A3	0.152	0.296	El
48	GB93-76	Gasket 24	16	65Mn	0.0562	0.42	
47	GB52-76	Nut N24	16	A3	0.112	1.79	Bra
46	GB30-76	Bolt N24×85	16		0.405	6.5	The
45	GB30-76	Bolt N20×55	8	A3	0.183	1.454	
44	R1552	brake backing strip	2	A3F	0.952	1.904	
43	R1547	Motor backing strip17	2	A3F	2.89	5.78	
42	Q1-182.162H	reduction gear backing strip-10×70×120	2	A3F	0.052	1.32	
41	T4-1936.1700	wheel backing strip-10×50×185	16	A3F	0.6	9.6	
40	Q10418-79	Obstructs the iron slab 80×20	10	A3F	0.158	1.56	R
39	R1835	motor foundation50	4	part	8.8	35.2	
38	Replaces the part	Reel place	Sees the table	part	Sees the table	Sees the table	Ti
37	R657-10	Gear backing strip-10×700CB20	2	A3F	9.6	19.2	ff
36	R1835	Brake place	2	part	8.1	16.2	
35	N735	Small trolley frame	1	part			
34		Electric motorYZR280S-10	2	Product	747	1494	
33	A736	Switch assemblyLX7-1-1	2	Product	9.7	19.4	
32	Replaces the part	Reel	Sees the table	Product	Sees the table	Sees the table	Ti
31	Q1-421.3P	Reduction gearZCH650-3CA	2	Product	850	1700	th
30	S3396	Brake pulley shaft coupling	2	Product	71.8	153.6	
29	Z181	BrakeYNZ4-400/121	2	Product	168	336	
28	3200	Axis ø55×110/ø55×110	2	Product	11.4	22.8	
27	S2307	Gear shaft coupling	2	part	34.4	68.8	
26	GB93-76	Gasket 20	28	65Mn	0.0152	0.426	
25	GB52-76	Nut N20	28	A3	0.052	1.736	
24	GB30-76	Bolt N20×75	2	A3	0.242	0.484	Th
23	T1-322.1508G	ZSC-400-1-1	1	part	170	170	i
22	S1103	Gear shaft coupling	1	part	13	13	
21	0A4	Electric motor installment	1	part	168	168	
20	Z173	Brake YNZ4-200/30	1	part	41.3	41.3	
19	W2201G	Data plate installment	2	part	24.85	49.7	
18	T2-351.1563G	Passive wheel group ø350	2	part	112	224	
17	50B	Data plate installment	1	part	0.054	0.054	
16	H270	Transportation drill tubing	2	part	0.37	0.74	
15	GB1102-74	Safe ruler	1	A3F	2.3	2.3	
14	GB1102-74	Steel wire 5×(37)-20.5-155	1	Product	Sees the table	Sees the table	
13	GB1102-74	Steel wire 6×(37)-20.5-155	1	Product	Sees the table	Sees the table	op
12	02-457.4H	Buffer	2	part	27.5	55	
11	T2-351.1563	Passive wheel group ø350	2	part	105	210	
10	E1055	Small trolley Electric conduction frame	1	part	63	63	
9	GB93-76	Gasket 12	28	65Mn	0.05	0.14	
8	GB52-76	Nut N12	24	A3	0.016	0.384	
7	GB30-76	Bolt N12×30	16	A3	0.041	0.656	S
6	S2306	Gear shaft coupling	4	part	30.31	21.24	h
5	3210	Axis ø65×105/ø65×105	2	part	11.5	23	
4	04-182.161H	Gear backing strip-10×70×90	2	A3F	0.5	1	Th
3	GB93-76	Gasket 16	2	65Mn	0.008	0.016	
2	GB52-76	Nut N16	2	A3	0.034	0.068	
1	GB30-76	Bolt N16×35	2	A3	0.085	0.017	S

51091.2

The small vehicle 10t Grab chart

Weight ( Kg ) prop: B (9080) 1: 1: 1s  
Altogether 1 page of 1s  
Shandong qingyun qizhongjiexiey Dongyueqizhongshebe