

# Electric floor crane manual

## RME02



Notes: Please read manual to know product better before using

# **Electric floor crane RME02 safety instructions**

## **Before using**

- 1 User should read product manual carefully before using
- 2 Check and confirm all in good condition. Battery is fully charged. Do not use crane when battery is charged
- 3 Before lifting, please confirm there are no barriers or workers within arm radius.

## **During using**

- 1 Crane should be used on flat, horizontal and hard floor
- 2 When using, the diagram of load capacity and telescopic arm length should be well noted.
- 3 Push crane slowly. When push the crane, height between cargo and floor should be not more than 50mm
- 4 Running distance should be as short as possible. Make sure work is done safely. Do not push it hard and harm cargo or worker.
- 5 If necessary, press the red emergency button. Draw the emergency button, crane will return normal operation status.

## **After using**

- 1 When operator leaves workcell, make sure to lock the battery.
- 2 When work is done, unload cargo from crane. Do not hang cargo for a long time

Notes: Crane should be kept in dry area. Can not work in rain or snow. Must not be used on slope.

# Electric floor crane RME02 tech spec

▲Crane running electrically, lifting hydraulically, moving forward hydraulically.

Arm height and angle can be adjusted.

▲Quality and powerful hydraulic pump, VARTA maintenance free battery

▲Quality oil pump for heavy duty usage

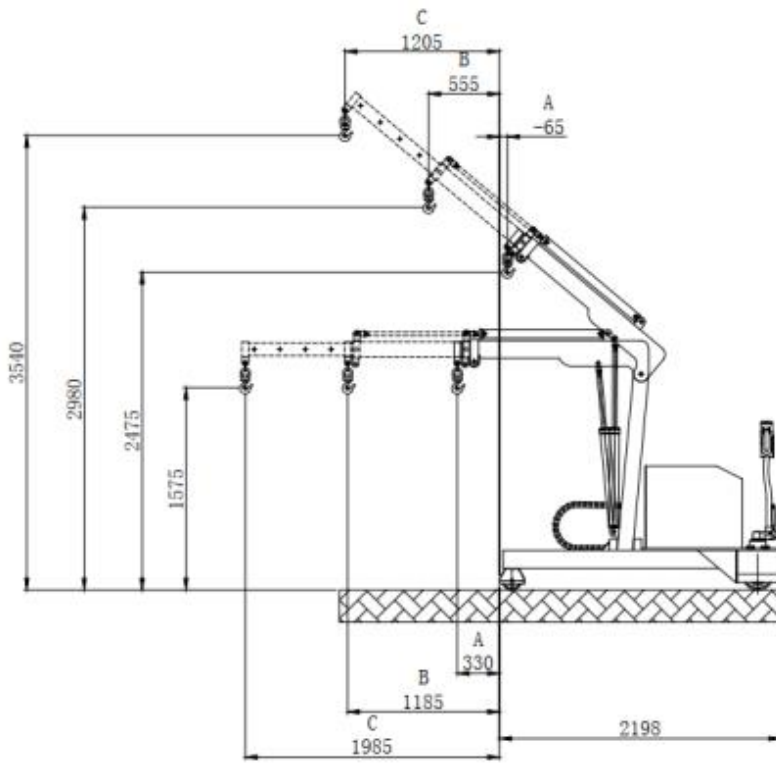
▲Equipped with safe valve, crane can be folded.

▲Suitable for entering area hard to access.

**Notes: During usage, diagram between load capacity and arm length should be well noted to ensure safety.**

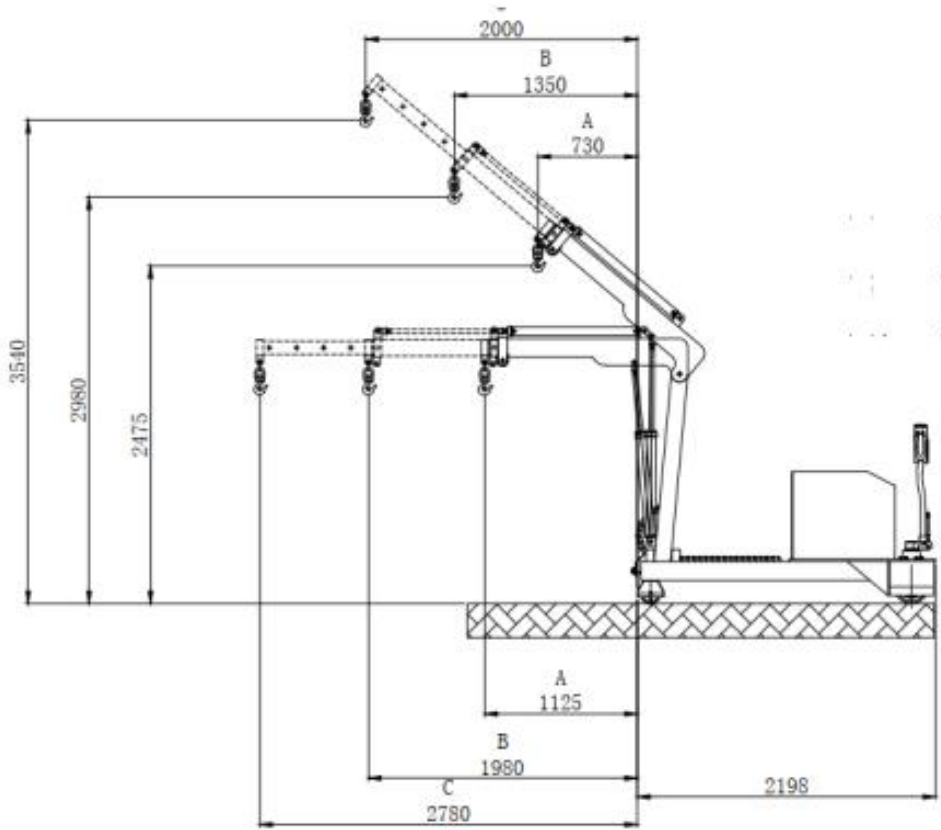
Product name	Electric floor crane
Model	RME02
Net weight	725kg
Counter balance weight	600kg
Battery size	406*172*211mm
Battery weight	30kg*2pcs
Lifting Motor power	2.2kw
Running motor	0.75kw
Running speed	5km/h
Dimensions	2200*1050*1950mm
Front wheel	Φ150*70mm
Drive wheel	Φ250*80mm

## Original position



Model		RME02		
Position		A	B	C
Angle 0°	Beam length	330mm	1185mm	1985mm
	Capacity	1500kg	950kg	500kg
Angle 40°	Beam length	-65mm	555mm	1205mm
	Capacity	2000kg	1200kg	600kg

**After moving forward**



Model		RME02		
Position		A	B	C
Angle 0°	Beam length	1125mm	1980mm	2780mm
	Capacity	1000kg	550kg	200kg
Angle 40°	Beam length	730mm	1350mm	2000mm
	Capacity	1100kg	580kg	350kg