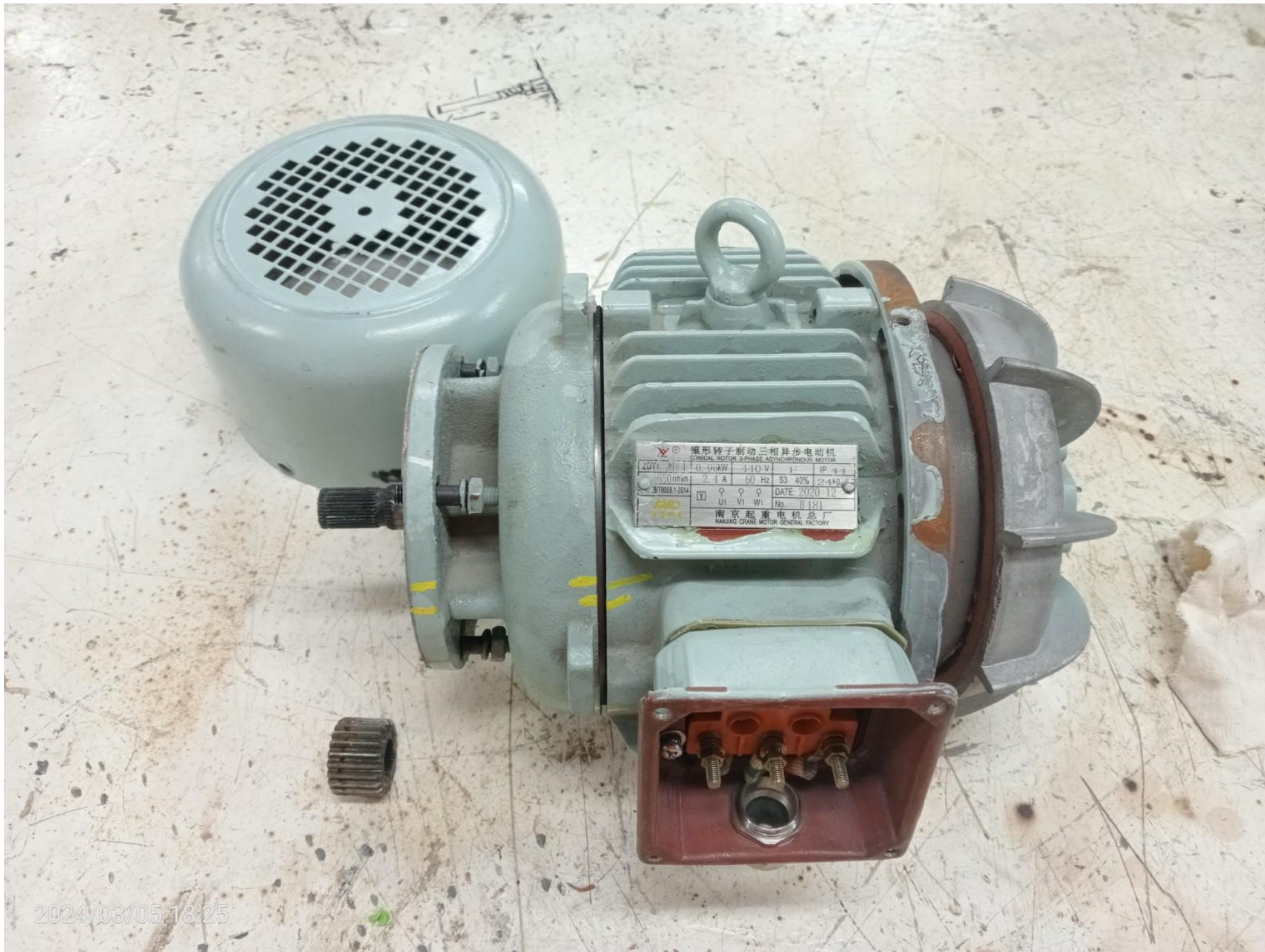
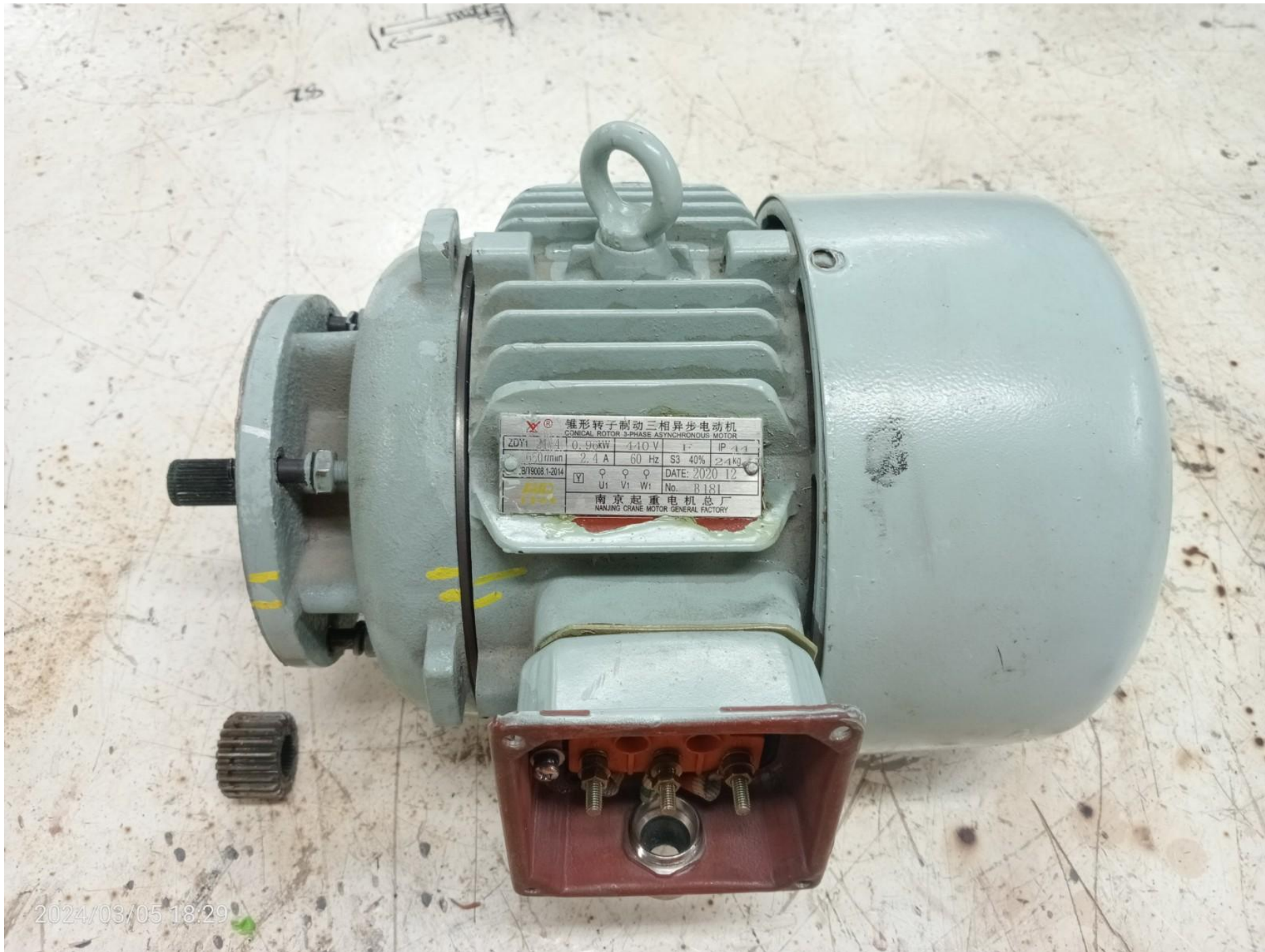


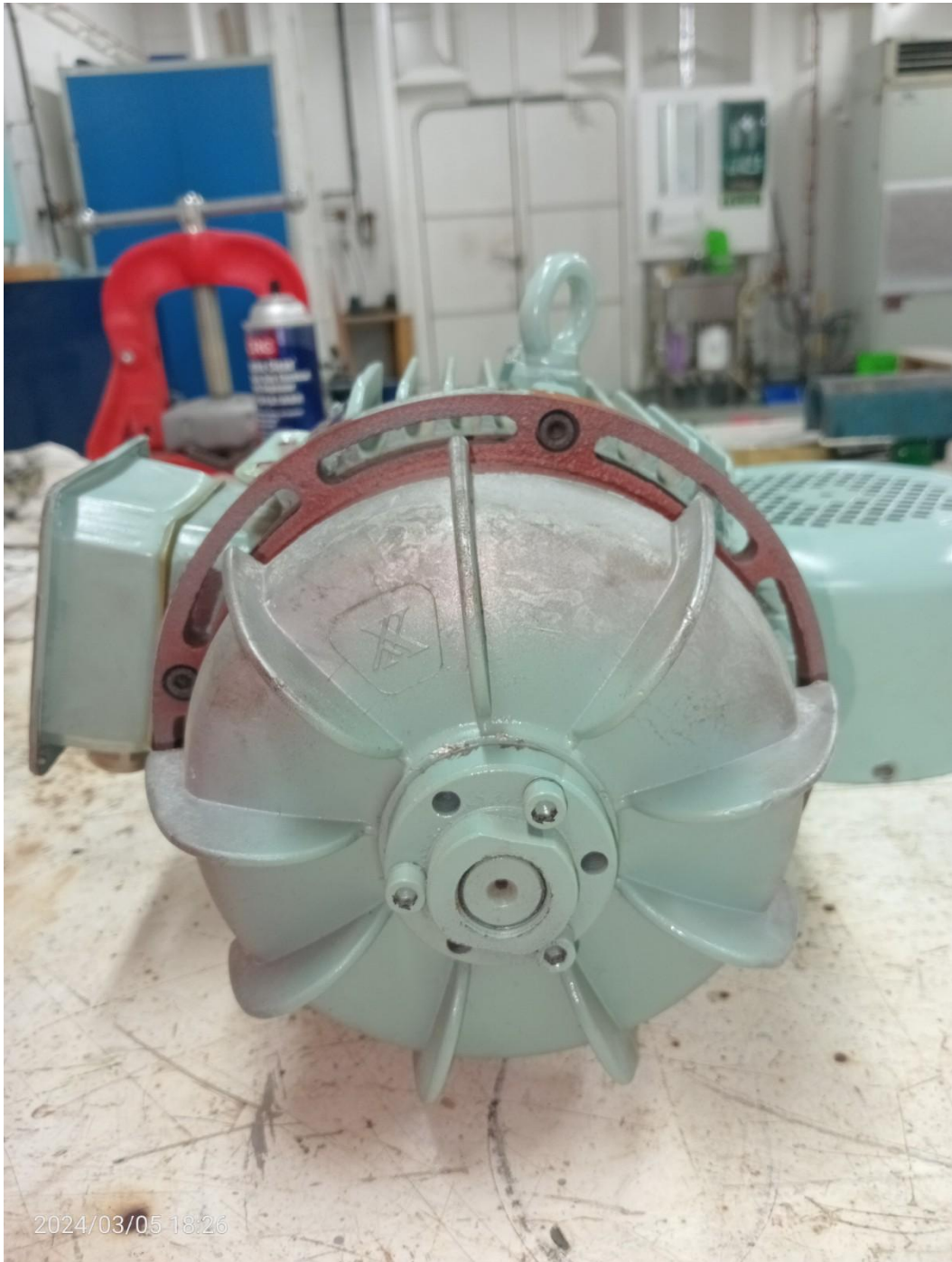
18.05
mm



2024/03/05 18:25



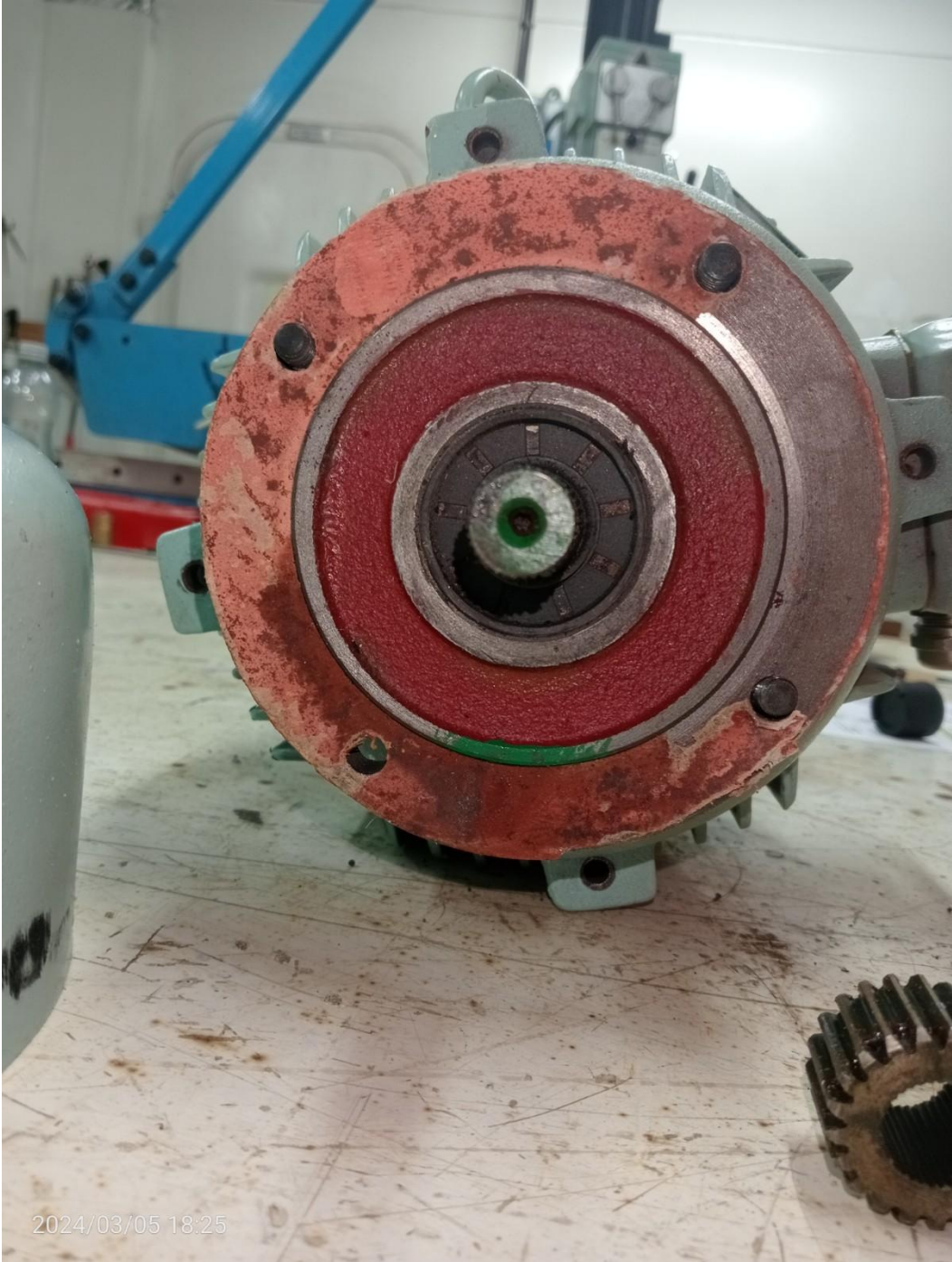
2024/03/05 18:29





锥形转子制动三相异步电动机
CONICAL ROTOR 3-PHASE ASYNCHRONOUS MOTOR

ZDY1 200-4	0.96kW	440 V	F	IP 44
650 r/min	2.4 A	60 Hz	S3 40%	24kg
B/T9008.1-2014	<input checked="" type="checkbox"/> Y	♀ ♀ ♀ U1 V1 W1	DATE: 2020 12	
	No. B181			
南京起重电机总厂 NANJING CRANE MOTOR GENERAL FACTORY				



2024/03/05 18:25

