

PART NO.	PART NAME	MATERIAL	QUANTITY	REG. ENGINE UNIT	SIZE	REMARKS
1						

MAX. LIFTING WEIGHT : 1900 lb
TIP WEIGHT : 1445 lb
DAWIT & HANDLE WEIGHT : 2990 lb

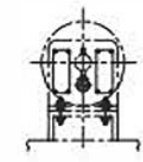
VENDOR DOCUMENT REVIEW

- 1. REVISE AND RESUBMIT
- 2. TO BE ISSUED AS ISSUED PROVIDED COMMENTS ARE INCORPORATED
- 3. NO COMMENT - FINAL ISSUE

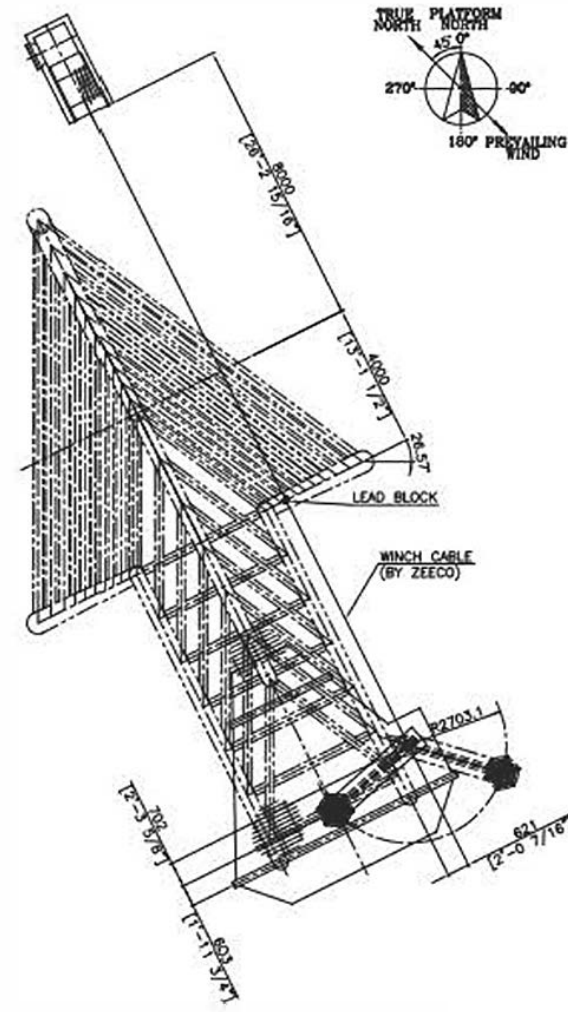
LOADING DATA

HOR.	28 KN
VERT.	28 KN

LOADING DATA
(FOR LEAD BLOCK)



DETAIL OF LEAD BLOCK
(FOR LEAD BLOCK)

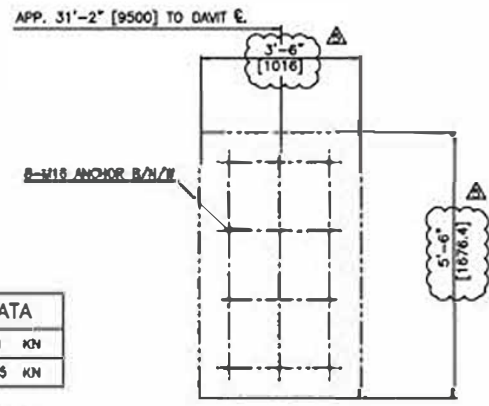


PLAN FOR WINCH
(SCALE : 1/100)

LOADING DATA

HOR.	28 KN
VERT.	16.5 KN

LOADING DATA
(FOR LIFTING WINCH)



ANCHOR BOLT LAYOUT
(FOR LIFTING WINCH)

<input type="checkbox"/> 1. REVISE AND RESUBMIT Work may not proceed	Project Name:
<input type="checkbox"/> 2. TO BE RESUBMITTED Work may proceed provided comments are responded	MWHE-TP JV Registration Number: 5495-0162-MR-0184-001
<input type="checkbox"/> 3. NO COMMENT Work may proceed	MWHE-TP JV Doc Code: A02001
Approved from this document does not release vendor of his responsibility for the correct engineering design and fabrication. This equipment or product shall be made as per the contract, regulations and specifications.	MWHE-TP JV Tag Number: 01A-6201
Reviewed by: _____ Signature _____ Date _____	

JOB SITE: OFFSHORE TURKMENISTAN

END USER:

S.O. NO.: 15558 P.O. NO.: 54950162018400101013 APP: GYS

FLARE BOOM DAWIT LOWERING AND FOUNDATION LOADING DATA DWG.

FOR: _____

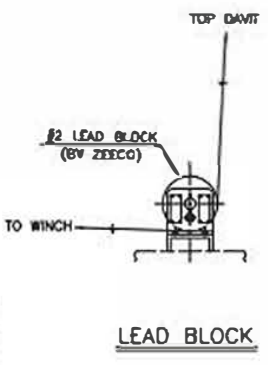
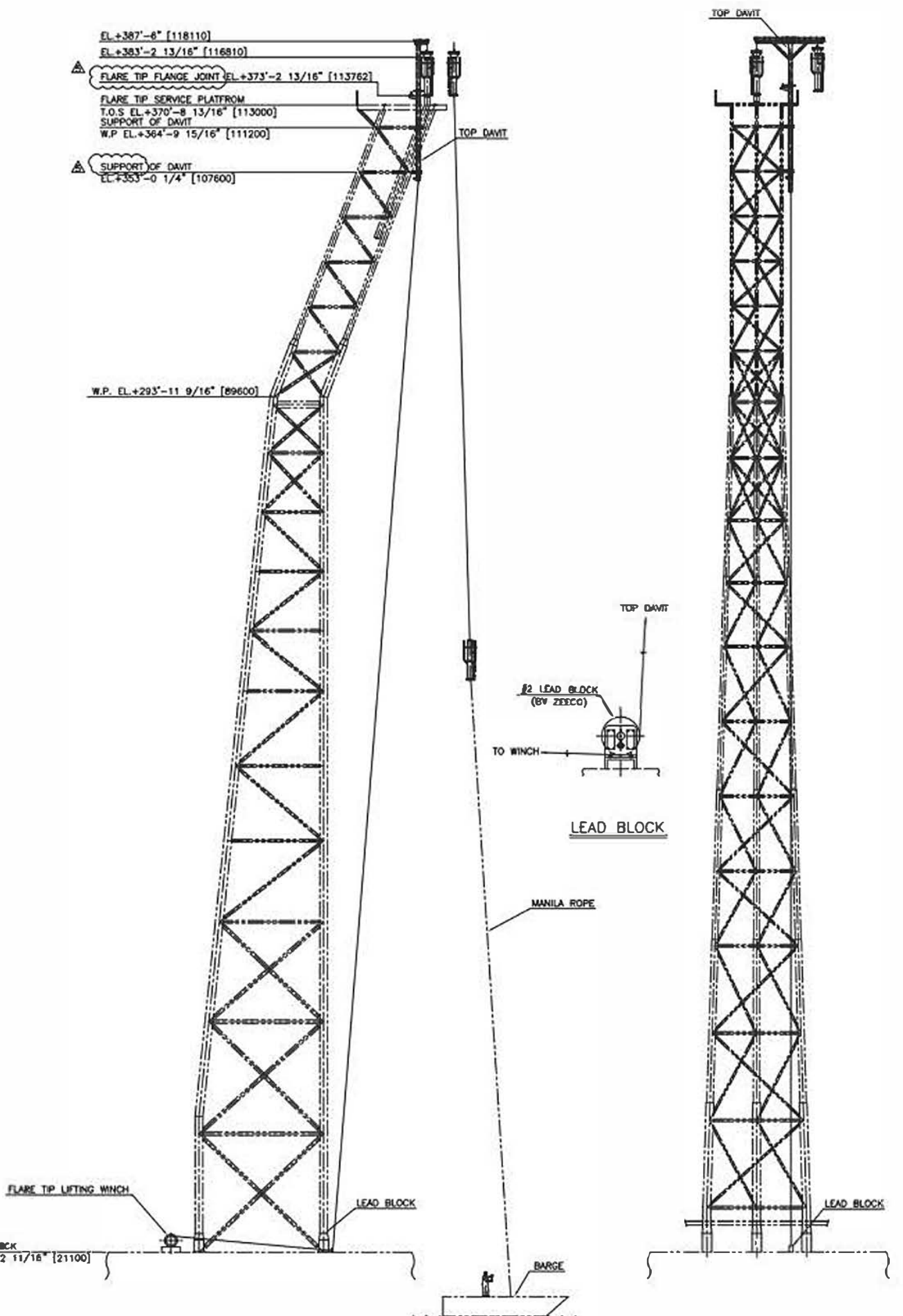
DRAWN: MGE	DATE: 19JAN06
CHK: SCS	APP: DMW
SCALE: 1/200	REV: 5
DRAWING NUMBER: B-SC-555	SHT. 1 OF 1

NO	DATE	REVISION DESCRIPTION	BY	CHK	APP.
5	13AUG10	REVISED AS MARKED	CM	CM	CJM
4	24MAR09	REVISED AS MARKED	MGE	SCS	CJM
3	18AUG06	REVISED AS MARKED	MGE	SCS	BWM
2	14JUL06	REVISED AS NOTED	MGE	SCS	BWM
1	26APR06	REVISED AS MARKED	MGE	SCS	DMW
0	19JAN06	ISSUED FOR APPROVAL	MGE	SCS	DMW

EL+387'-6" [118110]
EL+383'-2 13/16" [116810]
FLARE TIP FLANGE JOINT EL+373'-2 13/16" [113762]
FLARE TIP SERVICE PLATFORM
T.O.S EL+370'-9 13/16" [113000]
SUPPORT OF DAWIT
W.P. EL+364'-9 15/16" [111200]
SUPPORT OF DAWIT
EL+353'-0 1/4" [107600]

W.P. EL+293'-11 9/16" [89600]

UPPER DBCK
EL+89'-2 11/16" [21100]



LEAD BLOCK

MANILA ROPE

BARGE