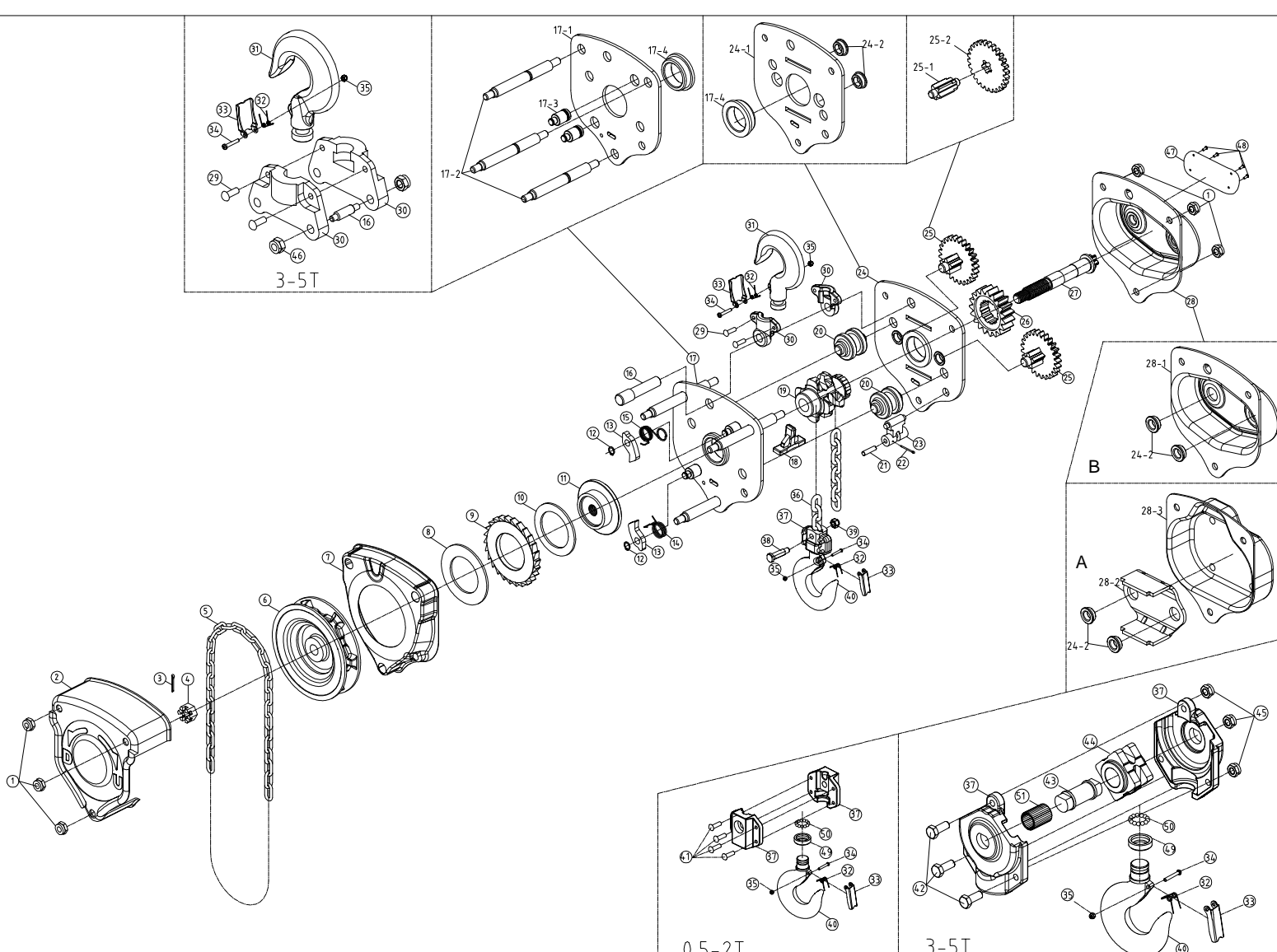


No.	Parts	QTY	No.	Parts	QTY
			25	Disc gear assembly	2
1	Hex nut of hand wheel cover 0.5T-M6/1.2T-M8/3T-20T-M10	6	25-1	Gear 1st	4
2	Hand wheel cover	1	25-2	Gear 2nd	4
3	Split pin	1	26	Spined gear	1
4	Hexagon slotted nut:0.5&1&1.5&2&5: M12	1	27	Pinion shaft	1
5	Hand Chain	1	28	Gear cover assembly	1
6	Hand wheel	1	28-1	/	1
7	Brake disc cover	1	28-2	Gear cover	1
8	Friction plate A	1	29	Name plate cover	1
9	Ratchet gear	1	30	Top hook housing	1
10	Friction plate B	1	31	Top hook	1
11	Brake seat	1	32	Springs of safety latch	1
12	Snap ring	2	33	Safety latch	1
13	Pawl	2	34	Pin of safety latch	1
14	Spring of pawl A	1	35	Hex nut of bottom hook 0.5-1T:M6/1.5-20T:M8	1
15	Spring of pawl B	1	36	Load chain	1
16	Pin of top hook	1	37	Bottom hook housing	2
17	Left side plate assembly	1	38	Pin of bottom hook	1
17-1	Left side plate	1	39	Hex nut of bottom hook's: 0.5- 1T:M6/1.5-20T:M8	1
17-2	Support pin	3	40	Bottom hook	1
17-3	Pin of pawl	2	41	Rivet of bottom hook housing 0.5T:φ5*18mm/1T:φ5*20mm/ 1.5-2T:φ6*20mm	4
17-4	Bearing	2	42	Screw bolt of bottom hook's housing B M8*35mm	3
18	Stripper	1	43	Shaft of bottom hook's Alex	1
19	Chain sprocket	1	44	Alex of bottom hook's housing	1
20	Guide roller	2	45	Hex nut of bottom hook's housing: 0.5-1T:M6/1.5-20T:M8	3
21	Pin of suspension plate	1	46	Hex nut of top hook's housing: 0.5-1T:M6/1.5-20T:M8	2
22	Split pin	1	47	Name plate	1
23	End anchor	1	48	Rivet of name plate	4
24	Right side plate assembly	1	49	Sleeve of bearing	1
24-1	Right side plate	1	50	Ball bearing of bottom hook	
24-2	Steel ring	4	51	Needle of bottom hook's Alex	



Vital type chain block